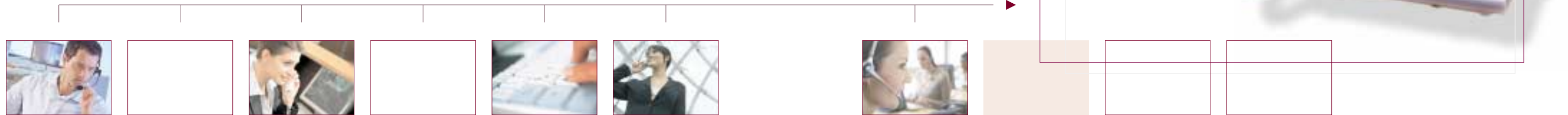


# Panasonic

ideas for life

2 0 0 6 - 2 0 0 7  
Business Telephone  
Systems



Panasonic made its first impact on the telephone systems industry in 1986 with the launch of the world's first two "hybrid port" systems (KX-T308 and KX-T616). The cost savings and superior flexibility of these hybrids quickly made them the world's best-selling systems.

In 1993 Panasonic rocked the industry again by introducing the world's first digital "super-hybrid" telephone systems (KX-TD816 and KX-TD1232).

The company followed that up in 1995 by releasing the first Digital Voice-Processing System (KX-TVP100).

Since then Panasonic has continued to demonstrate its commitment to providing future-ready, solution business oriented products, and developing new hardware and software as network services and customer needs evolve.

This is clearly seen in the KX-TDA series of Hybrid IP PBX's, which are being released in 2003 to further support IP telephony while maintaining easy operation.

The KX-TDA100 was awarded "Best Buy" in the Telephone Systems and Networks category of "What to Buy for Business", a UK magazine, in February 2003.

Panasonic continues to improve IP solutions with its KX-TDA product line-up, such as new IP proprietary telephones and IP SoftPhone, which provide affordable proprietary IP terminals to those working at home or in remote offices.



## Hybrid IP PBX Systems

- KX-TDA600
- KX-TDA200
- KX-TDA100
- KX-TDA30

Panasonic's Hybrid IP PBX is a family of network-oriented products. They are designed to support IP telephony, first- and third-party computer telephony, and networking, with ease of use a central precept of the entire product line.

System hardware and software were developed by Panasonic to be both highly reliable and easily extensible through a common architecture, independent of product type and number of ports.

A core concept behind the new product line is the idea of "Friendly Systems for Everyone." This in-house ease-of-use initiative has prompted an increased focus on incorporating user-friendly features, in addition to integrating the latest technologies. Drawing on its extensive experience in the field, Panasonic has met the goals of this initiative by enabling end-users to feel fully and immediately at ease with virtually every aspect of the new products.

The new product line demonstrates Panasonic's commitment to the realisation of this mission through time and field-tested functionalities. These include : backward compatibility, universal slots, CTI application interoperability via standard published interfaces, and remote maintenance and software upgrade capabilities.

# Hybrid IP PBX Systems

The All You Need Networked System to maximise the performance of your business in the Convergence age



## Grows With You

The KX-TDA600's modular design lets you expand the system as your needs evolve. The Basic Shelf provides maximum 160 ports (240 ports with DXDP\*1), and the optional Expansion Shelf provides maximum 688 ports (1008 ports with DXDP)\*2. Plus with the KX-TDA600's free slot architecture, you can easily insert expansion cards and access new features as well as expand your capabilities. This expandability means you can enhance system capabilities and features to meet your changing needs, without having to purchase a new system.

\*1 Digital eXtra Device Port  
\*2 When connected to analogue CO line. The number may vary depending on the configuration.



**KX-TDA600/620**  
640 CO lines and  
640 to 960 Extensions  
(Max. 688 to 1008 ports)



**KX-TDA30**  
Max. 8 CO lines / 28 Extensions  
(52 Extensions with DXDP) or  
Max. 12 CO lines / 24 Extensions  
(44 Extensions with DXDP)  
IP-GW or E1 can be added using  
a remaining slot.



**KX-TDA100**  
64 CO lines /  
64 to 128 Extensions  
(Max. 108 to 158 ports)



**KX-TDA200**  
128 CO lines and  
128 to 256 Extensions  
(Max. 216 to 316 ports)

## Makes Communications Easy

- Stylish, Easy to use, and Efficient digital telephones
- A USB terminal that provides easy plug-n-play connection to a PC
- Expansion of digital proprietary telephones (DXDP)

## Cost-effective Performance

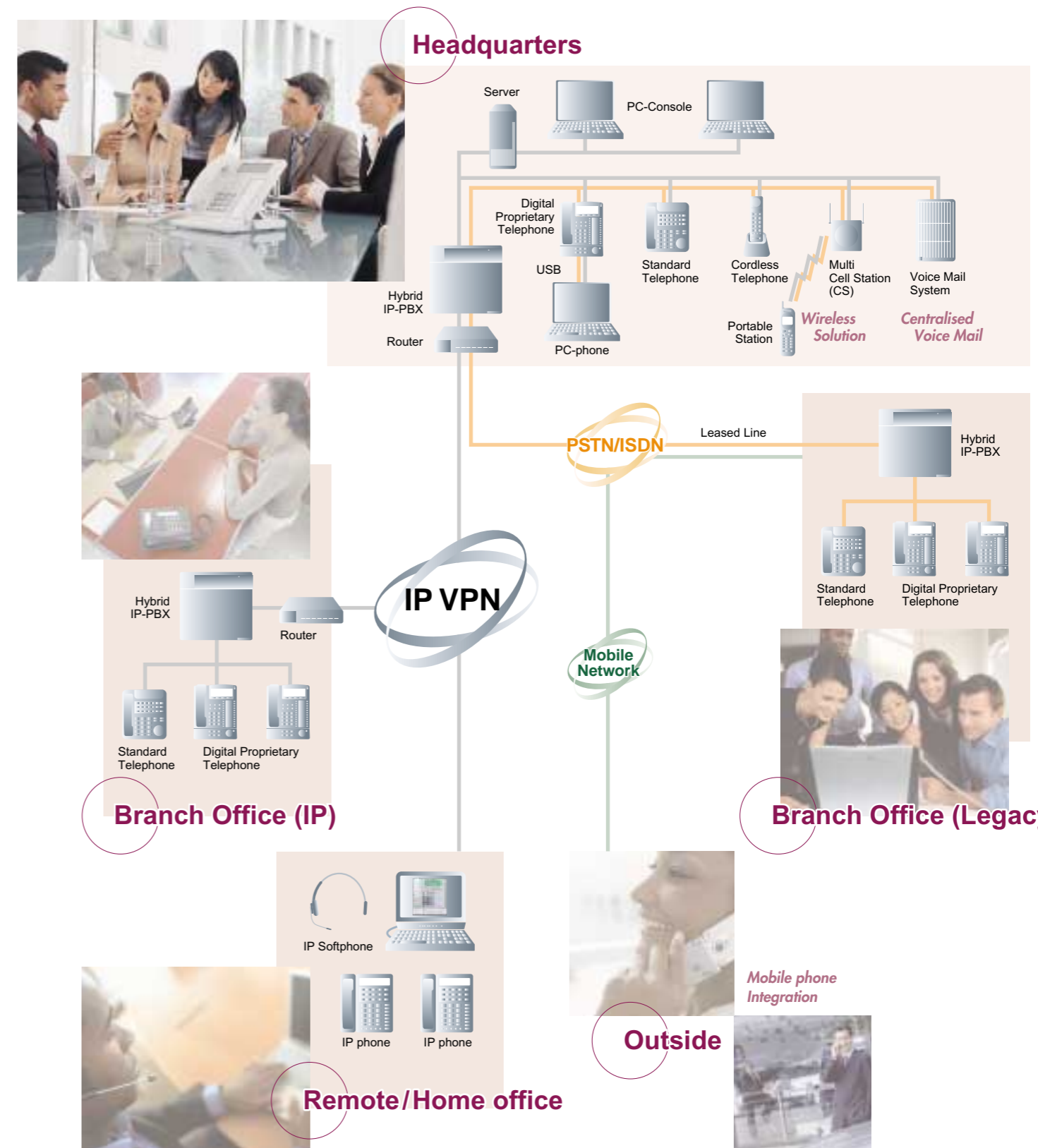
- Voice over Internet Protocol (VoIP)
- QSIG digital networking allows basic call handling (outgoing and incoming), closed numbering routing, and CLIP/COLP/CLIR/COLR
- Automatic Route Selection (ARS) / Least Cost Routing (LCR)
- Reliable networking via T1/E1, E&M

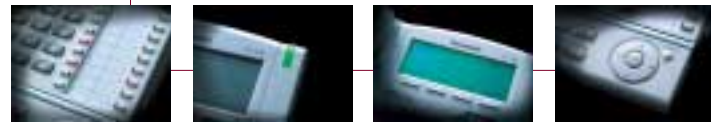
## Efficiency That You Will Appreciate

- Multi-cell wireless integration
- Mobile phone integration
- TAPI 2 CTI interface (TAPI and CSTA)
- PC-phone / PC-console
- Advanced call centre function
- ISDN capability (BRI/PRI)
- Centralised Voice Mail
- 2ch Cell Station to connect DPT interface port

## Controlling multiple remote offices through an IP network

By adding an IP network to your existing system, you could manage a company-wide IP-PBX system from your head office, even if the sales offices, branch offices and plants are in different locations. This can make management much more efficient while also creating a more comfortable office environment. Panasonic's KX-TDA series can also be flexibly upgraded to adapt to conventional infrastructures and changes in the operating environment.





### KX-T7636 with KX-T7603

- Display Unit
- 6-Line Back-lit Display
  - 24 Programmable CO Keys
  - Digital Speakerphone
  - Optional 12 CO Keys and USB port
  - eXtra Device Port (XDP) and DXDP
  - Headset Compatible



### KX-T7633

- Display Unit
- 3-Line Back-lit Display
  - 24 Programmable CO Keys
  - Digital Speakerphone
  - Optional 12 CO Keys and USB port
  - eXtra Device Port (XDP) and DXDP
  - Headset Compatible



### ▶▶ Programmable Keys with Red/Green LED

Easy-to-Read Back-lit Display

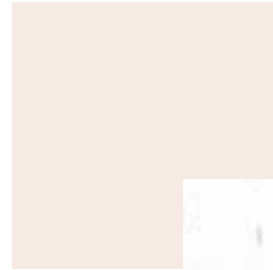
Time-Saving, Easy-to-Use Navigator Keys

Ergonomically-Designed, 4-Step, Tilt-Angle Adjustment

Simple Plug-n-Play USB Connection to a PC (KX-T7636 and KX-T7633)

Headset Jack for Hands-Free Convenience

Digital Duplex Speakerphone



### KX-T7630

- Display Unit
- 3-Line Display
  - 24 Programmable CO Keys
  - Digital Speakerphone
  - eXtra Device Port (XDP) and DXDP
  - Headset Compatible



### KX-T7665

- Display Unit
- 1-Line Display
  - 8 Programmable CO Keys
  - Message / Ringer Lamp
  - Speakerphone
  - DXDP

### KX-T7640

- Digital DSS Console
- 60 Direct Stations Selection (DSS) keys



### KX-T7710

- Proprietary Telephone
- Message / Ringer Lamp
  - One-touch Button Panel
  - Data Port



### Multi-language Capability

The Hybrid IP PBX accommodates up to five different languages, for use in areas where more than one language is commonly spoken. The language can be set at the PBX for a specific telephone extension, to meet the needs of the person who uses that extension.

### Message/Ringer Lamp (Red/Green)

The large, easy-to-see lamp illuminates to indicate when a call comes in, so you can tell when the telephone is ringing even from a distance. The colour of the lamp indicates the status -- green for an internal extension line, flashing red for an outside line, and constant red to indicate that a caller has left a message.

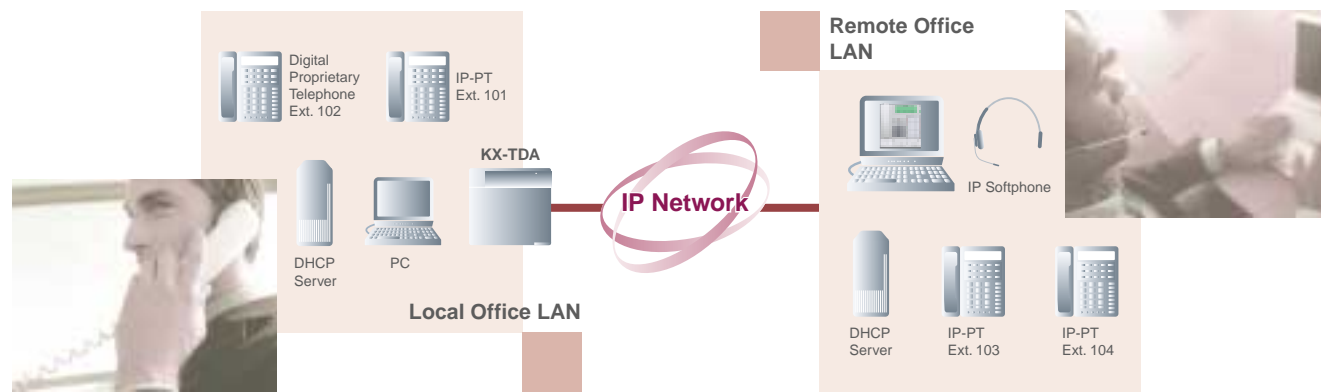
### eXtra Device Port (XDP) and Digital XDP (DXDP)

Use the XDP to add an analogue phone, cordless phone, or other single-line device to your system, without the cost of an additional line. This lets you send a fax while talking to a customer. Or, by connecting a modem to the XDP, you can download data from your PC or access the Internet while talking. The DXDP allows you to increase the number of digital telephones without additional cards. It lets you put functional digital phones in the hands of more of your staff to boost overall office productivity.

# Centralise Your Distributed Offices with the Ease of IP



Now you can connect branch offices and off-site staff to a single Hybrid IP-PBX in your main office with the ease of Internet Protocol (IP). Only one central Hybrid IP-PBX is needed, which means you can administer and manage telephone communications between all your offices simply and efficiently. And save on expensive telephone wiring - your IP telephones connect to your existing LAN cables.



## KX-NT265 IP Telephone

- 1 Line Display
- 8 Programmable CO Keys
- Message/Ringer Lamp
- Digital Speakerphone



**Compatible Operating Systems :**  
 KX-TDA100/KX-TDA200 : PMPR Software File Version 3.0000 or later  
 KX-TDA600 : PLMPR Software File Version 3.0000 or later  
 KX-TDA0470 (IP-EXT16) : PIPEXT Software Version 1.001 or later / PVOIPEX Software Version 1.011 or later

## KX-NCS8100 IP Softphone (IP Proprietary Telephone in PC)

## KX-NT136 IP Telephone

### Dual-Ethernet Ports

With 2 Ethernet ports built in, there is no need to sacrifice an existing hub or router connection for each IP-PT. Simply connect each IP-PT to an existing LAN cable, then connect each extension user's PC to the corresponding IP-PT. No PC software settings are necessary, and no additional hubs or routers are needed!

### Effortless LAN Integration

After installing an optional 16-channel IP extension card in the Hybrid IP-PBX, the PBX can be integrated with your existing LAN by simply connecting to your existing router or switching hub.

### Programmable Keys with Red / Green LED

Extension users can customise their telephones to provide quick access to outside lines, other extensions, or commonly used features. For increased administration and control, the system administrator can also customise the programmable keys for multiple extension users using a PC and the KX-TDA Maintenance Console software.

### Time-Saving, Easy-to-Use Navigator Key

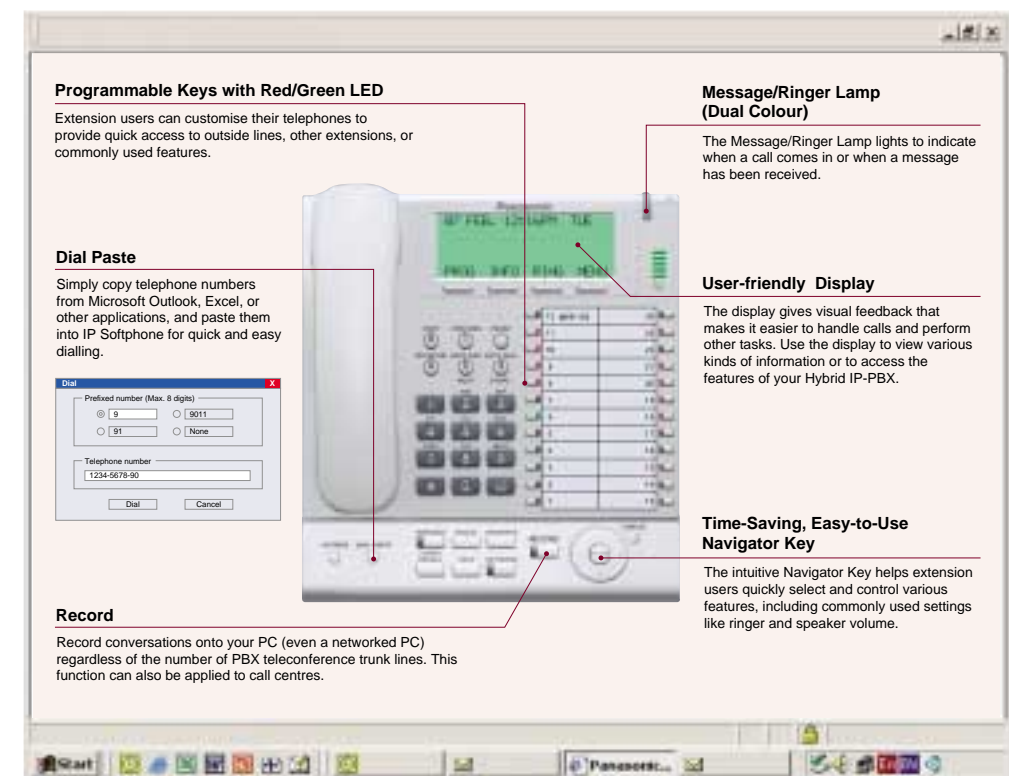
The intuitive Navigator Key helps extension users quickly select and control various features, including commonly used settings such as ringer and speaker volume.

### User-friendly Display

The backlit display gives visual feedback that makes it easier to handle calls and perform other tasks. Use the display to view a variety of information or to access the various features of your Hybrid IP-PBX.

### Message / Ringer Lamp (Dual Colour)

The Message/Ringer Lamp lights to indicate when a call comes in or when a message has been received, so you can always tell when you have a call or message—even from a distance.



# Analogue Telephone Systems

An analogue telephone system that offers easy-to-use communication power



Panasonic's analogue telephone system has taken telephone systems for small to mid-sized companies a giant leap forward, offering features seldom available in this category. Its easy upgradability reduces the cost of expansion, Caller ID increases your efficiency, and voice-processing integration improves productivity.



**KX-TEA308**  
3 CO lines / 8 Extensions

- 3 CO lines and 8 Extensions (8: Hybrid)
- 3-level Automatic Reception with Voice Guidance
- DISA (Direct Inward System Access) with message
- Built-in Voice Message (BV)
- Caller ID Display on SLT and APT
- Flexible SMS Routing
- Intuitive Customisation and Maintenance
- UCD (Uniform Call Distribution) with message
- Doorphones, Door Openers, and Doorbells



**KX-TES824**  
3 CO lines / 8 Extensions  
(Max. 8 CO lines / 24 Extensions)

- Expandable from 3 CO lines and 8 Extensions to 8 CO lines and 24 extensions
- 3-level Automatic Reception with Voice Guidance
- DISA (Direct Inward System Access) with message
- Built-in Voice Message (BV)
- Caller ID Display on SLT and APT
- Flexible SMS Routing
- Intuitive Customisation and Maintenance
- UCD (Uniform Call Distribution) with message
- Doorphones, Door Openers, and Doorbells



**KX-TEM824**  
6 CO lines / 16 Extensions  
(Max. 8 CO lines / 24 Extensions)

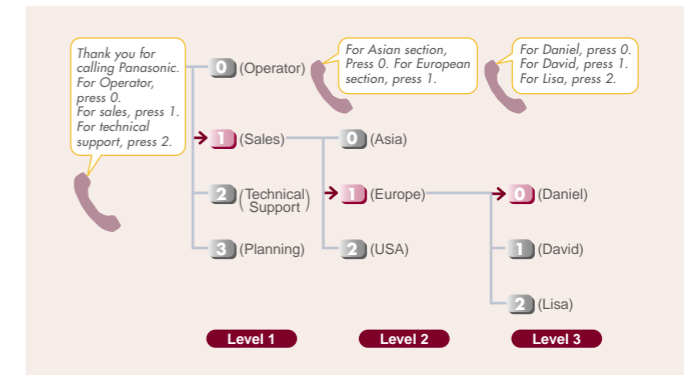
- Expandable from 6 CO lines and 16 Extensions to 8 CO lines and 24 extensions
- 3-level Automatic Reception with Voice Guidance
- DISA (Direct Inward System Access) with message
- Built-in Voice Message (BV)
- Caller ID Display on SLT and APT
- Flexible SMS Routing
- Intuitive Customisation and Maintenance
- UCD (Uniform Call Distribution) with message
- Doorphones, Door Openers, and Doorbells

## 3-level Automatic Reception with Voice Guidance

- More efficient handling of incoming calls.
- Callers can call after-hours and still access desired extensions.
- Shares the operator load.

3-level Automated Attendant (AA) service allows a caller to dial a single-digit number following the guidance of 3-level DISA\* outgoing messages, and be directed to the appropriate section without having to go through an operator.

\*DISA (Direct Inward System Access)

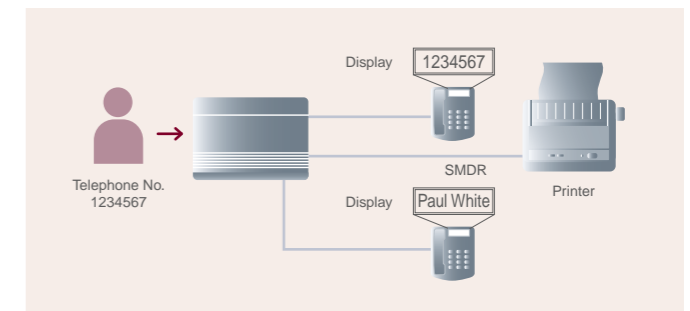


## Caller ID Display\*1 on SLT and APT

- Caller Recognition.
- Better Call Management.

The system is compatible with Caller ID, which allows a user to see the caller's information on Single Line Telephones (SLTs)\*2 and Analogue Proprietary Telephones (APTs). An assigned name in program "System Speed Dialling Name Setting" will be displayed when the caller's telephone number matches one of System Speed Dialling numbers assigned in program "System Speed Dialling Entry". Proprietary display telephones can be used to access the Caller ID log for the 20 most recent calls (Call Log). And the system has 300 common logs. The logged incoming calls can be called back easily.

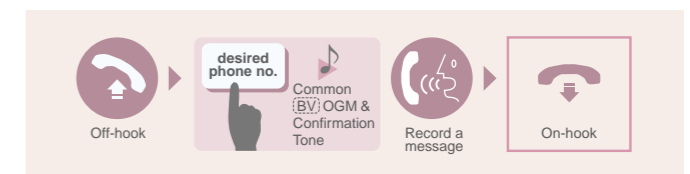
\*1 An optional card is required. Please contact your dealer or phone company to confirm if the Caller ID service is available in your area.  
\*2 SLT that supports Caller ID is required.



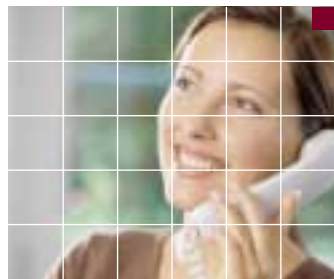
## Built-in Voice Message (BV)\*

Customise your mailbox by recording your own greeting messages that are played when you can't answer your phone. Your callers can record their messages directly into your personal mailbox, allowing you to receive private information without relying on hand-written notes and memos. Call Centres and Workgroups can use the common message area for recording caller messages that can be played back later by an operator (manager).

\*An optional voice message card is required.



# Smart-Looking Telephones that Answer the Needs of Today's Energetic Office



Panasonic's new telephones combine a fresh, energetic design with functions that answer the call for convenience and efficiency.



### KX-T7735

- Display Unit
- 3 lines x 16 characters LCD
  - 12 Programmable CO Keys
  - Navigator Key
  - Speakerphone
  - Headset Compatible



### KX-T7730

- Display Unit
- 1 line x 16 characters LCD

### KX-T7740

- DSS Console
- 32 Direct Station Selection (DSS) keys
  - 32 Busy Lamp Field (BLF) keys

**High-Quality Design**  
Easy-to-grip handset, solid-touch keys, and a smart matte finish.

**Incoming Call / Message Lamp**  
This large, easy-to-see lamp announces incoming calls or messages, so you'll always know whose telephone is ringing – even from a distance.

**Navigator Key (KX-T7735 and KX-T7730)**  
For quick adjustment of the volume and display and contrast.

**Tilt-Angle Adjustment**  
The telephone adjusts to either of two angles for easier use and a smaller, space-saving footprint.



			TEA308	TES824	TEM824	TVM50	TVM200
Telephones	KX-T7730	Proprietary Telephone with 1-Line Display and Speakerphone (12 CO keys)	•	•	•		
	KX-T7735	Proprietary Telephone with 3-Line Display and Speakerphone (12 CO keys)	•	•	•		
	KX-T7740	DSS Console (32 DSS / BLF keys, 16 PF keys)	•	•	•		
	KX-T7710	Proprietary Telephone with Message / Ringer Lamp, One-Touch Dialler, Data Port	•	•	•		
Others	KX-T30865	Doorphone	•	•	•		
	KX-A227	Backup Battery Cable	•	•	•		
Analogue Cards	KX-TE82460	2-Port Doorphone / Door Opener Card	•	•	•		
	KX-TE82461	4-Port Doorphone / Door Opener Card		•	•		
	KX-TE82474	8-Port Single Line Telephone Extension Card		•	•		
	KX-TE82480	2-Port Analogue CO Line and 8-Port Single Line Telephone Extension Card		•	•		
	KX-TE82483	3-Port Analogue CO Line and 8-Port Hybrid Extension Card		•			
	KX-TE82491	Message Expansion Card for OGM (1 ch, 180 sec)		•	•		
	KX-TE82492	2-Channel Voice Message Card	•	•	•		
	KX-TE82493	3-Port Caller ID Card	•	•	•		
TVM Cards	KX-TVM502	2-Port Hybrid Expansion Card				•	
	KX-TVM524	Memory Expansion Card				•	
	KX-TVM594	LAN Interface Card				•	
	KX-TVM296	Modem Card				•	•
	KX-TVM204	4-Port Digital Expansion Card					•

SLT : Single Line Telephone APT : Analogue Proprietary Telephone

DISA : Direct Inward System Access

Notes:

Some cards will be exported to limited countries. Please contact your dealer and confirm the availability of specific cards in your country.

# Optional Accessories and Telephones for KX-TDA



## Optional Accessories and Telephones for KX-TDA

Telephones		TDA30	TDA100	TDA200	TDA600
KX-T7630	Digital Proprietary Telephone with 3-Line Display and Speakerphone (24 CO keys)	•	•	•	•
KX-T7633	Digital Proprietary Telephone with 3-Line Back-lit Display, Speakerphone (24 CO keys)*	•	•	•	•
KX-T7636	Digital Proprietary Telephone with 6-Line Back-lit Display, Speakerphone (24 CO keys)*	•	•	•	•
KX-T7640	Digital DSS Console (60 DSS)	•	•	•	•
KX-T7603	Add-on Key Module (12 CO keys)	•	•	•	•
KX-NT136	IP Proprietary Telephone with 6-Line Back-lit Display, Speakerphone (24 CO keys)	•	•	•	•
KX-NT265	IP Proprietary Telephone with 1-Line Display and Speakerphone (8 CO keys)	•	•	•	•
KX-A237	Optional AC adaptor for KX-NT136/265	•	•	•	•
KX-T7665	Digital Proprietary Telephone with 1-Line Display and Speakerphone (8 CO keys)	•	•	•	•
KX-T7730	Proprietary Telephone with Speakerphone, 1-Line Display (12 CO keys)	•	•	•	•
KX-T7710	SLT with Message Lamp, One-Touch Dialler, Data Port	•	•	•	•
Others					
KX-TCA87	Headset	•	•	•	•
KX-TCA89	Headset	•	•	•	•
KX-T7090	Headset	•	•	•	•
KX-T7601	USB Module	•	•	•	•
KX-T7740	DSS Console (32 DSS / BLF keys, 16 PF keys)	•	•	•	•
KX-T30865	Doorphone	•	•	•	•
Wireless					
KX-TCA256	DECT Portable Station (PS) Compact Business Model	•	•	•	•
KX-TCA155	DECT Portable Station (PS) Basic Model	•	•	•	•
KX-TDA0141CE	2-Channel Cell Station Unit for DECT Portable Station	•	•	•	•
KX-TDA0142CE	4-Channel Cell Station Unit for DECT Portable Station	•	•	•	•
KX-TDA0143	4 Cell Station Interface Card	•	•	•	•
KX-TDA0144	8 Cell Station Interface Card	•	•	•	•
KX-TDA0196	Remote Card	•	•	•	•
KX-TDA0180	8-Port Analogue Trunk Card	•	•	•	•
KX-TDA0181	16-Port Analogue Trunk Card	•	•	•	•
KX-TDA0182	8-Port DID Card	•	•	•	•
KX-TDA0184	8-Port E & M Trunk Card	•	•	•	•
KX-TDA0188	E-1 Trunk Card	•	•	•	•
KX-TDA0284	4-Port BRI Card	•	•	•	•
KX-TDA0288	8-Port BRI Card	•	•	•	•
KX-TDA0290	PRI Card	•	•	•	•
KX-TDA0484	4-Channel VoIP Gateway Card	•	•	•	•
KX-TDA0170	8-Port Digital Hybrid Extension Card	•	•	•	•
KX-TDA0171	8-Port Digital Extension Card	•	•	•	•
KX-TDA0172	16-Port Digital Extension Card	•	•	•	•
KX-TDA0173	8-Port Single Line Telephone Extension Card	•	•	•	•
KX-TDA0174	16-Port Single Line Telephone Extension Card	•	•	•	•
KX-TDA0175	16-Port Single Line Telephone Extension with Message Lamp Card	•	•	•	•
KX-TDA0161	4-Port Doorphone Card (for KX-T30865)	•	•	•	•
KX-TDA0164	4-Port External Input / Output Card	•	•	•	•
KX-TDA0166	16-Channel Echo Canceller Card	•	•	•	•
KX-TDA0168	Extension Caller ID Card	•	•	•	•
KX-TDA0189	8-Port Caller ID / Pay Tone Card	•	•	•	•
KX-TDA0190	Optional 3-Slot Base Card	•	•	•	•
KX-TDA0191	4-Channel Message Card	•	•	•	•
KX-TDA0193	8-Port Caller ID Card	•	•	•	•
KX-TDA0410	CTI Link Card	•	•	•	•
KX-TDA0470	16-Channel VoIP Extension Card	•	•	•	•
KX-TDA0490	16-Channel VoIP Gateway Card	•	•	•	•
KX-TDA0103	L-Type Power Supply Unit	•	•	•	•
KX-TDA0104	M-Type Power Supply Unit	•	•	•	•
KX-TDA0105	Memory Expansion Card (MEC)	•	•	•	•
KX-TDA0108	S-Type Power Supply Unit	•	•	•	•
KX-A228	S / M-type Back-up Battery Cable	•	•	•	•
KX-A229	L-type Back-up Battery Cable	•	•	•	•
KX-A258	Blank Slot Cover	•	•	•	•
KX-TDA0820	SD Memory Card for Software Upgrade	•	•	•	•
KX-TDA0920	SD Memory Card for Software Upgrade to Enhanced Version	•	•	•	•
KX-TDA3171	4-Port Digital Extension Card	•	•	•	•
KX-TDA3172	8-Port Digital Extension Card	•	•	•	•
KX-TDA3173	4-Port Single Line Telephone Extension Card	•	•	•	•
KX-TDA3174	8-Port Single Line Telephone Extension Card	•	•	•	•
KX-TDA3180	4-Port Analogue Trunk Card	•	•	•	•
KX-TDA3183	2-Port Analogue Trunk Card	•	•	•	•
KX-TDA3193	4-Port Caller ID Card	•	•	•	•
KX-TDA3280	2-Port BRI Card	•	•	•	•
KX-TDA3283	1-Port BRI Card	•	•	•	•
KX-TDA3480	4-Channel VoIP Gateway Card	•	•	•	•
KX-TDA3105	Memory Expansion Card	•	•	•	•
KX-TDA3161	4-Port Doorphone and External Input / Output Card for KX-T30865	•	•	•	•
KX-TDA3166	8-Channel Echo Canceller Card	•	•	•	•
KX-TDA3168	Extension Caller ID Card	•	•	•	•
KX-TDA3191	2-Channel Message Card	•	•	•	•
KX-TDA3192	2-Channel Simplified Voice Message Card	•	•	•	•
KX-TDA3196	Remote Card	•	•	•	•
KX-TDA3920	SD Memory Card for Software Upgrade to Enhanced Version	•	•	•	•
KX-A236	Optional AC Adaptor	•	•	•	•
KX-A291	Hotel PMS Interface (Up to 128 rooms)	•	•	•	•
KX-A292	Hotel PMS Interface (Up to 256 rooms)	•	•	•	•
KX-A293	Hotel PMS Interface (Up to 960 rooms)	•	•	•	•
KX-TDA0300	PC Console Software	•	•	•	•
KX-TDA0350	PC Phone Software	•	•	•	•
KX-TDA6105	Memory Expansion Card	•	•	•	•
KX-TDA6110	Bus Master Card	•	•	•	•
KX-TDA6111	Bus Master Expansion Card	•	•	•	•
KX-TDA6166	16-Channel Echo Canceller Card	•	•	•	•
KX-TDA6174	16-Port SLT Extension Card	•	•	•	•
KX-TDA6175	16-Port SLT Extension with Message Lamp Card	•	•	•	•
KX-TDA6181	16-Port Analogue Trunk Card	•	•	•	•
KX-TDA6201	Mouting Kit for expanding to a 3-or 4-shelf System	•	•	•	•

SLT : Single Line Telephone  
 APT : Analogue Proprietary Telephone  
 DPT : Digital Proprietary Telephone  
 DISA : Direct Inward System Access  
 DECT : Digital Enhanced Cordless Telecommunications  
 \* The number of the CO keys can be added up to 36 CO with KX-T7603.  
 Note: Some cards will be exported to limited countries. Please contact your dealer and confirm the availability of specific cards in your country.

# System Capacity

## Analogue Telephone Systems

		TEA308	TES824	TEM824
CO lines	Basic	3	3	6
	Max		8	8
Extensions	Basic	8	8	16
	Max		24	24
Intercom paths		3	4	4
DTMF receivers		2	2	4
Door intercoms and openers (max.)		2	4	4

## KX-TDA600 (PLMPR Ver. 2.2)

Telephone		KX-TDA600			
		Basic System	2 Shelf System	3 Shelf System	4 Shelf System (Max)
Without DXDP*	Without DXDP*	160	320	480	640
	With DXDP*	240	480	720	960
	Single Line Telephone (SLT)	160	320	480	640
	KX-T7600 series Digital Proprietary Telephone (DPT)	160	320	480	640
	Other DPT	128	256	384	512
	Analogue Proprietary Telephone (APT)	80	160	240	320
	IP-PT (Proprietary Telephone)	160	320	480	640
	Direct Station Select (DSS) Console			64	
	Voice Processing System (VPS)			8	
	Trunks	Trunk Port	160	320	480
ISDN Trunk (PRI)		150	300	450	600
Analogue Trunk		160	320	480	640
IP-Gateway		160	320	480	640
Wireless	Portable Station (PS)			256	
	With Memory Expansion Card			512	
Cell Station (CS)	Without Memory Expansion Card	32	64	96	128
	With Memory Expansion Card	16	32	48	64
Doorphone Port		8	8	8	8
PC Console		8	8	8	8
PC Phone		128	128	128	128

\*DXDP: Digital eXtra Device Port

## KX-TDA100/200 (PMPR Ver. 3.0)

Maximum Trunk and Extension Cards  
 The following number of trunk and extension cards can be installed in the Hybrid IP-PBX for expansion.

Card Type	KX-TDA100	KX-TDA200
Trunk Card*1	6	8
Extension Card	6	8
Total	6	11

\*1 One T1, E1, PRI30, PRI23, or IP-GW4 card counts as 2 cards.

## Maximum Terminal Equipment

Terminal Equipment Type	KX-TDA100*2		KX-TDA200*3	
	Without MEC	With MEC	Without MEC	With MEC
SLT	64	96	128	128
KX-T7600 series DPT	64	128	128	256
KX-T7565 DPT	64	96	128	128
Other DPT	32	32	128	128
APT	24	24	64	64
IP-PT	64	96	128	128
DSS Console		8		8
CS		32		32
PS		128		128
Voice Processing System (VPS)		2		2
Doorphone		16		16
Door Opener		16		16
External Sensor		16		16
External Relay		16		16
PC Console		8		8
PC Phone		64		128

\*2 For the maximum capacity, Memory Expansion Card (MEC) and / or M-Type Power Supply Unit may be required.

\*3 For the maximum capacity, Memory Expansion Card (MEC) and / or L-Type Power Supply Unit may be required.

Note:  
 Please ask your dealer for maximum capacity, and configuration.

## KX-TDA30 (PSMPR Ver. 3.0)

### Maximum Line

Line Type	Maximum Number
Trunk Line	12
VoIP Line	4
E1 Line	30

### Maximum Terminal Equipment

Terminal Equipment Type	Without Additional AC Adaptor		With Additional AC Adaptor	
	Without MEC Card	With MEC Card	Without MEC Card	With MEC Card
SLT	24		24	
KX-T7600 series DPT / DSS console, and KX-T7565 DPT	Total 24		Total 24	Total 48
	KX-T7600 series DPT	24	24	48
	KX-T7600 series DSS console	4		
Other DPT / DSS console and APT	Total 4		Total 24	
	Other DPT	4	24	
	Other DSS console	4	4	
	APT	4	4	
DSS Console		4		4
Cell Station		4		8
Wireless Telephone		28		28
Voice Processing System	1 System*1		1 System*1	
SLT, PT, DSS console, and VPS	Total 28		Total 28	Total 52
PC-Console		2		2
PC-Phone		24*2		24*2
Door Opener		4		4
Doorphone		4		4
External Sensor		4		4
External Relay		4		4

\*1 A maximum of 8 channels of a single VPS can be connected to the Hybrid IP-PBX.

\*2 Five licenses are provided on each CD-ROM.



Revolutionary changes are occurring today in both telecommunications and information technology. Our business environments are also changing to focus more on solution-oriented applications. Panasonic business telephone systems are uniquely positioned to maximise the benefits to be afforded by such changes, with products that are always at the cutting edge and packaged in such a way as to offer customers a total solution approach.

- ▶ Networking Solutions
- ▶ Messaging Solutions
- ▶ Professional Billing or Hospitality
- ▶ Small Call Centre Management
- ▶ Wireless Solutions



### Networking Solutions

Any type of business can benefit from a reliable, low-cost, easy-to-use inter-office networking system. Features such as E&M leased lines and voice-over IP can help you cut costs dramatically while enjoying easy access within a private inter-office network. For example, network numbering lets you assign telephone numbers to each extension at a branch or head office, saving time and money. The KX-TDA Hybrid IP PBX system supports QSIG protocol, allowing you to interconnect multiple PBX locations to build a large, effectively seamless virtual telephone system, as well as giving you access to more advanced communication functions.

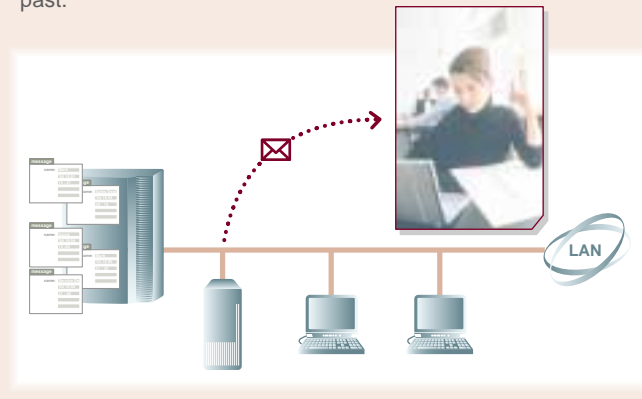
### Messaging Solutions

Panasonic's messaging solutions give you multilingual capabilities and efficient call handling, so you can give customers the service and support they deserve. You also benefit from a system that takes messages automatically and keeps you in touch 24 hour a day. And, of course, you'll love the cost savings. Panasonic's messaging solutions mean more convenience for you and more satisfaction for your customers.



#### e-message

You can configure the VPS to notify you by e-mail when you've received new messages; you can then log in to your mailbox remotely and listen to your messages. Better yet, have the VPS send your new messages in telephone-quality WAV file format as e-mail attachments, and listen to your messages without even picking up the phone! You can easily forward them by e-mail to other parties, and keep backup copies of those messages on your PC. Calling the office to check your messages is finally a thing of the past.



#### Centralised Voice Mail

Voicemail resource can be shared across the network. It provides centralised mailbox access, Message Waiting indication, Direct mailbox access and Auto attendant service.

#### Custom Service

Using Custom Service, you can give callers 1-digit access to department extensions, special announcements, and other information. The caller listens to the first Custom Service Menu, then select from the options available.

#### Voice Mail (VM) Menu on the LCD

For easier operation, Voice Mail menus and the number of new messages received can be displayed on the LCD screens of Proprietary Telephones. Users can retrieve messages or specify parameters.

#### Exclusive Panasonic Functions

##### ▶▶ Live Call Screening (LCS)

When the LCS mode is activated, you can monitor incoming messages and decide whether or not to take the call. This handy feature is similar to having a telephone answering machine right at your desk.

##### ▶▶ Two-Way Recording

This feature allows an extension user to record a conversation in a mailbox by simply pressing the Two-Way Record function key. A variation of this feature is **Two-Way Transfer**, which permits the extension user to record a conversation in another Subscriber's mailbox; this is ideal for firms that want their receptionists to personally record messages from callers.

### KX-TS730 Speakerphone

Easy teleconferencing among distant locations.  
- Super-Sensitive, High-Fidelity Conference Recording Speakerphone

The KX-TS730 Conference Speakerphone lets you conduct crystal-clear meetings by simply connecting it to an analogue phone line.

Teleconferences can be easily set up because the recording function is always ready.

The multi-microphone system consists of two microphones at each of the four corners that allow the unit to capture omnidirectional voices at a distance.



#### KX-TVM50

- 2 to 6 ports and 64 mailboxes
- 8-hour system recording time (max.)
- E-message
- Voice mail menu on the LCD
- Custom Service
- Live Call Screening (LCS)
- Two-Way recording
- Two-Way transfer



#### KX-TVM200

- 0 to 24 ports and 1024 mailboxes
- 1000-hour system recording time (max.)
- E-message
- Voice mail menu on the LCD
- Custom Service
- Live Call Screening (LCS)
- Two-Way recording
- Two-Way transfer



### Professional Billing or Hospitality

For companies in the hospitality field, Panasonic PBX systems are a great tool for improving productivity and customer service. These systems provide a built-in hotel function with features such as check in/out, wake up call, and more. They can also be integrated with an external charge box and message-waiting lamps on room telephones.

Use of a **Property Management System (PMS) interface** (KX-A291/KX-A292/KX-A293) allows the KX-TDA series to link with computer-based hotel management software, for efficient operation with most of the world's hotel software. This provides several features that boost efficiency and let you provide better customer service, including:

- Check in/out
- Wake up call set/cancel/confirmation/alarm
- Message waiting lamp on/off
- Room status information
- Call accounting
- Set / Clear extension name



### Small Call Centre Management

No matter how large or small your operation, Panasonic offers PBX systems that make you look brilliant. Our intelligent call-management features help improve work efficiency, increase customer satisfaction, and polish your company image. Panasonic digital telephone systems provide Uniform Call Distribution (UCD), which distributes calls to a group of extensions for your agents to answer. When all agents are busy, the system serves as a receptionist, playing a message to the caller. A supervisor can monitor the call status on the LCD of Digital Proprietary Telephone and check the real-time performance for the management decisions.

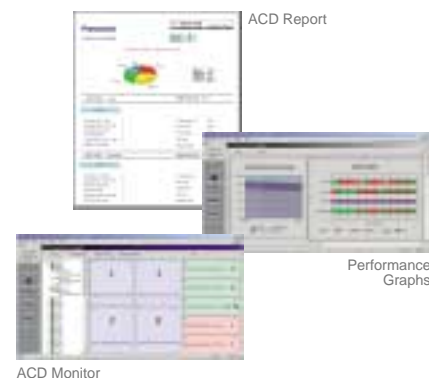


#### Built-in Call Centre features

- Call Distribution to Longest Idle Extension
- VIP Priority
- Busy-on-Busy
- Queuing Message
- Wrap-up
- Log-in / Log-out

▶ **Computer Telephony Integration (CTI)** paves the way to enormous improvements in efficiency by allowing telephone systems to connect with computer systems. The potential for CTI applications is large already and growing fast. For example, when your staff member is talking on the phone with a customer, the computer can automatically retrieve and display data on the caller, the account status and history, purchasing patterns, and other useful information. CTI is a valuable tool that can help your company improve sales and provide better customer service.

▶ **ACD Report Server (KX-NCV200)** is designed to bring advanced call centre functions to users of Panasonic PBX systems, such as the KX-TDA100/200 and KX-TDA600. This provides useful functions such as monitoring and call centre performance reports, and agent log-in. It also offers useful voice mail features.

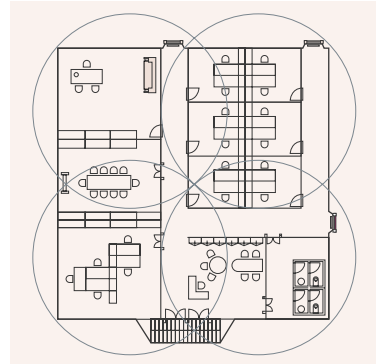


ACD Monitor



### Wireless Solutions (DECT)

Wireless compatible, Panasonic Business Telephone System gives you greater efficiency and mobility with communication powers that go way beyond the office. In operations such as factories and warehouses, it lets your staff stay on top of merchandise while moving about the shop floor. At car dealerships and other businesses with widespread locations, it lets you respond to customers more quickly. This new digital system lets you provide prompt customer service and make the most of every business opportunity.



### DECT



#### KX-TCA256\*

DECT

- 6 lines with 16-character LCD for calling line ID display and easy operation
- Graphical icon menu
- Dynamic operation guidance with soft keys
- Automatic hand-over
- Automatic Answer / Release with headset
- Incoming call indication by Ringer / Vibration
- 32-Polyphonic ring tones
- Customised caller ID
- 200-station phonebook
- Illuminated keypad
- Blue LCD backlight
- Battery – talk time : 17 hours standby time : 270 hours
- Dimensions (LxWxD) : 123 x 45 x 22 mm
- Weight : 120 g



#### KX-TCA155

DECT

- 6 lines with 16-character LCD for calling line ID display and easy operation
- Graphical icon menu
- Dynamic operation guidance with soft keys
- Automatic hand-over
- Automatic Answer / Release with headset
- 32-Polyphonic ring tones
- Customised caller ID
- 200-station phonebook
- Illuminated keypad
- Blue LCD backlight
- Battery – talk time : 10 hours standby time : 120 hours
- Dimensions (LxWxD) : 143 x 48 x 31.5 mm
- Weight : 130 g

\*This is a replacement model from KX-TCA255.